

To Assemble:

Print this sheet out on 11x17 paper. Cut out playing mat and mount on poster-board and/or laminate [for stability]. Cut out [2] 2.5"x3.5" squares of felt and collect 8 pennies and 2 quarters. Mark pennies and quarters so you know whose winks are who's. Lay on the floor and play!

Get creative with the score card! Fill in the blank for incentives/punishments and go to town.

Ideas for Rewards [PG]:

- flirt
- eskimo
- Butterfly
- kiss on the cheek
- Peach
- Pear
- plum

SCORE CARD



POINTS

REWARDS

25
50
100
200
300
400
500

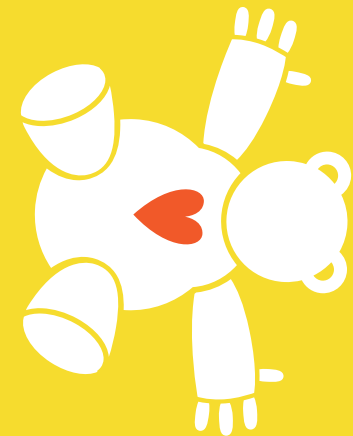
.....
.....
.....
.....
.....
.....
.....

OFFICIAL RULES [2 PERSON GAME]:

To determine who goes first, place the pot in the middle of the two players and mats and winks behind the baselines [12 inches from edge of the pot]. The color of wink that ends up closest to the pot [or lands with the highest number] gets to go first.

If a person pots one of the winks of the color being played in a particular shot, then the person gets an extra shot as part of the same turn. Each potted wink gets points based on the pot. If a wink gets potted in the skull section, the player loses all points and next turn. If a wink is potted in the hearts section, the player gets a wish after he/she pays the other player a compliment and gets another shot as part of the same turn.

At the end of the game, points are tallied and each player gets to choose his/her reward[s].



GIVE A
BEAR HUG



HOLD HANDS

PLAY FOOTSIES



NO LOVE. LOSE TURN.
LOSE POINTS

50 POINTS!!

25 POINTS!!

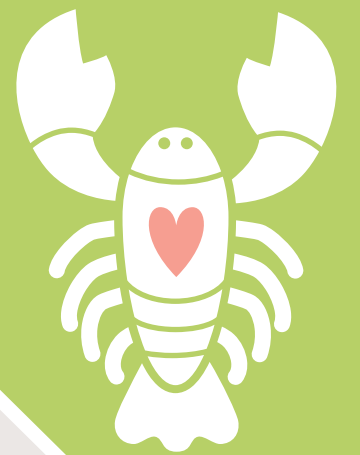
100 POINTS!!

25 POINTS!!

50 POINTS!!

GET A WISH
GIVE A COMPLIMENT

GIVE
LOBSTERS



P.S. "Lobsters" are what Chris and I refer to as back rubs.

cut at crop marks and mount to posterboard