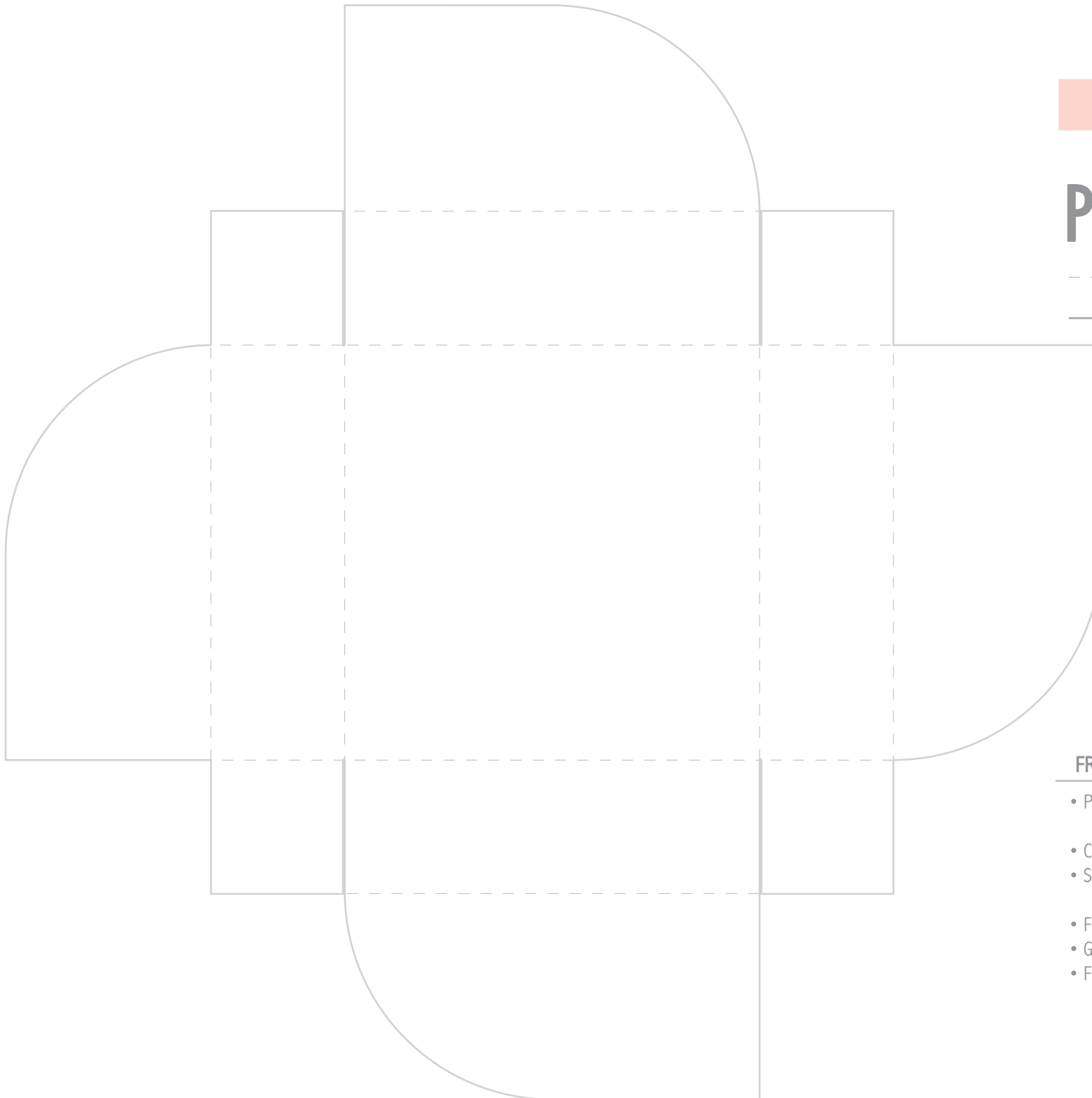




PETAL BOX

----- Score on dotted line

————— Cut on solid line



FREE FOR PERSONAL USE ONLY

- Print out on the back side of your favorite cardstock paper.
- Carefully cut out shape.
- Score with a bonefolder, bamboo skewer or retracted click pen
- Fold along dotted lines
- Glue square tabs to sides
- Fold tabs counter-clockwise & tuck the square end under first tab.